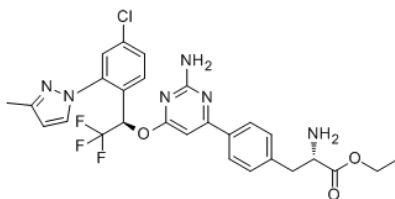


**Product Name** : LX1606  
**Cat. No.** : PC-43356  
**CAS No.** : 1033805-22-9  
**Batch No.** : PC-4335601  
**Chemical Name** : L-Phenylalanine, 4-[2-amino-6-[(1R)-1-[4-chloro-2-(3-methyl-1H-pyrazol-1-yl)phenyl]-2,2,2-trifluoroethoxy]-4-pyrimidinyl]-, ethyl ester

## PHYSICAL AND CHEMICAL PROPERTIES

**Molecular Weight** : 574.9819  
**Molecular Formula** : C<sub>27</sub>H<sub>26</sub>ClF<sub>3</sub>N<sub>6</sub>O<sub>3</sub>  
**Storage** : Powder -20°C 12 Months  
4°C 6 Months  
In solvent -80°C 6 Months  
-20°C 1 Month

**Chemical Structure** :



## ANALYTICAL DATA

**Appearance** : Solid powder  
**<sup>1</sup>H NMR Spectrum** : Consistent with  
**HPLC** : Consistent with  
**NP** : Consistent with  
**Purity (HPLC and/or LCMS)** : >98%  
**Conclusion** : The product has been tested and complies with the given specifications.

**Caution: Product has not been fully validated for medical applications. Lab Use Only!**

E-mail: tech@probechem.com